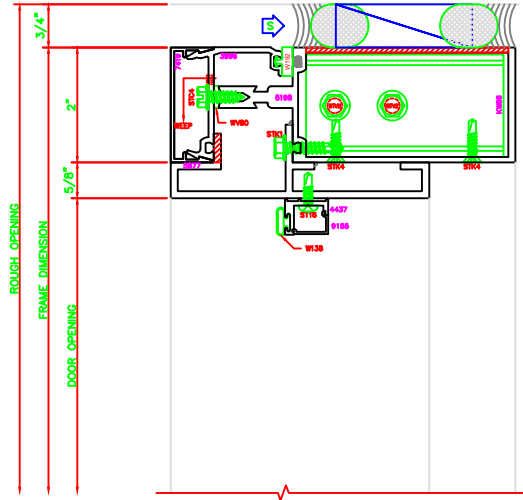


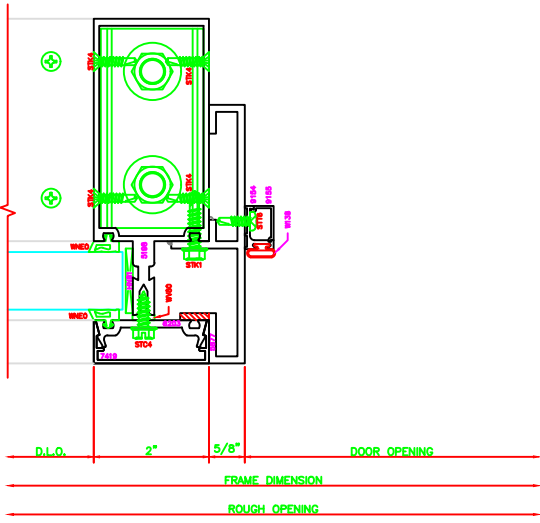
869	HEAD	5600	6"



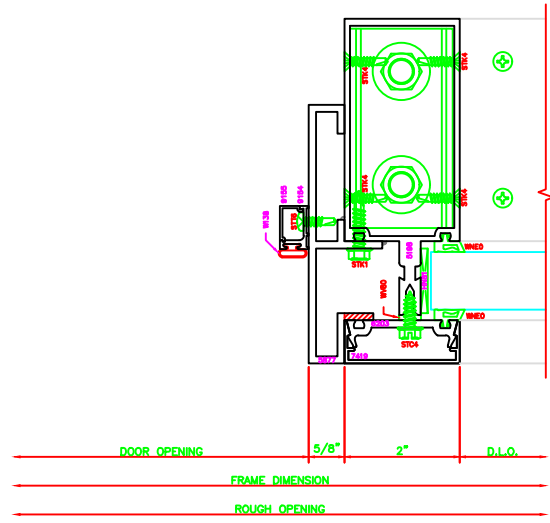
866	HEAD	5600	6"

ERASE NOTE:
OUTSWING HEAD FOR SURFACE CLOSERS

870	JAMB	5600	6"



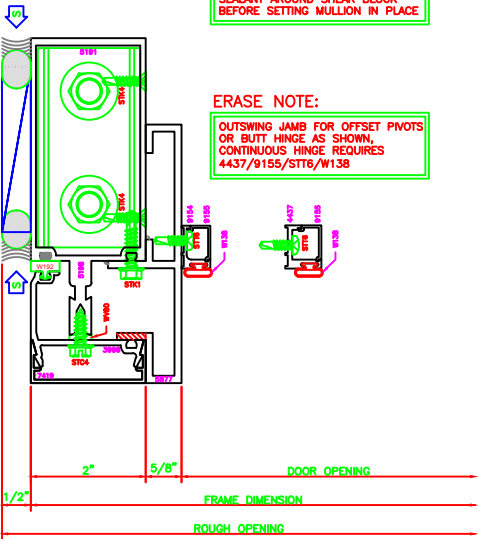
871	JAMB	5600	6"



867	JAMB	5600	6"

ERECTOR NOTE:
APPLY CONTINUOUS BEAD OF SEALANT AROUND SHEAR BLOCK BEFORE SETTING MULLION IN PLACE.

ERASE NOTE:
OUTSWING JAMB FOR OFFSET PIVOTS OR BUTT HINGE AS SHOWN, CONTINUOUS HINGE REQUIRES 4437/9155/STT6/W138



868	JAMB	5600	6"

